

Take a leaf out of our book...

Tree Safety Surveys

Our tree safety surveys involve a thorough visual assessment of all trees within the survey area, conducted from ground level, by qualified, experienced arboriculturists and the recording of those trees with significant defects that could pose a safety risk to people or property. The survey findings are produced on tree survey schedules and plans with accompanying photographs, detailing the information on the trees, the recommended works and completion timescales, in a concise and non-technical format.

Site Mapping According To Risk

Our tree surveys include zoning a site into high (red), medium (amber) and low (green) areas, based on the existing targets (i.e. buildings, roads and footpaths, playgrounds etc.) and the frequency of use, providing a more balanced approach to assessing the risk of a tree hazard.

Tree Plotting and GPS Software

For our surveys, the trees are plotted and recorded using GPS hand-held devices and professional mapping software, with an accuracy of between 1-2m. All plotted trees are also tagged with an individual reference number to aid identification on site.

Tree Safety Inspections

Where required, we can carry out detailed safety inspections and provide more comprehensive reports on individual trees of particular importance or significance.

Aerial Inspections

Our staff are trained and competent to carry out aerial tree inspections, from a mobile elevated platform or by climbing, to further assess potentially significant defects identified from the original ground-based inspection.

Internal Decay Detections

Our services include the use of specialised, technical equipment (such as the PICUS Sonic Tomograph or Resistograph drill resistance measurement device), as appropriate, to measure the extent of internal defects such as cavities or decay and determine appropriate works.

Third Party Complaints

Our staff are able to provide support and practical advice in respect of a neighbour's enquiry or complaint concerning a general tree issue.

Development Surveys

Our staff are experienced in carrying out detailed surveys and reports in accordance with British Standard 5837:2012 – Trees in relation to design, demolition and construction, including arboricultural impact assessments, mitigation, method statements and on-site monitoring.

Insurance Claims

Our comprehensive services also include specialist investigations and reports in respect of alleged tree-related claims concerning direct damage (physical contact) or direct damage (subsidence) to property.

...request a
Tree Survey.

The Living Forest...

The Living Forest Limited is a professional and friendly company which has been operating for over 18 years, providing the highest standards of tree care and forestry services across the South East of England.

With over 75 years combined arboricultural and forestry experience, our consultancy team is able to offer a comprehensive and skilled service, specialising in tree safety inspections and surveys to Councils and schools.

The Living Forest Ltd currently provides consultancy services to numerous Kent County Council (KCC) Schools, other KCC properties, and Parish Councils as well as a number of Academies throughout Kent, East Sussex and South East London.

Our tree safety surveys offer a practical and common-sense approach to tree risk management, incorporating a target evaluation and site zoning inspection system. This provides our clients with a cost-effective method of managing trees proportionate to the risk, to meet their duty of care.

We also carry out tree surveys in relation to design, demolition and construction works and tree inspections in response to a neighbour's enquiry, complaint or incident received by a school.

All staff have undergone enhanced DBS Checks and are fully qualified and insured to carry out tree surveys and provide advice.

David Levett MICFor, Dip Arb (RFS), M.Arbor.A
Chartered Arboriculturist & Consultancy Director



TREE SURVEY



DETAILED TREE INSPECTION



AERIAL INSPECTION

The Living Forest have been to Scotney Castle on several occasions to undertake tree safety surveys within the garden and estate and have always offered excellent advice and guidance. The recommendation that they give not only looks at tree safety, but what's best for the future management of the trees to ensure that they continue to grow in as healthy and safe condition as possible. We have some very special trees within our garden that are of national significance in terms of age, structure, and species, and The Living Forest always take this into consideration when recommending any work that is required.

National Trust

Excellent work from The Living Forest when coming to carry out a tree safety survey. They came out quickly, explained everything in detail and did all the necessary work, leaving our outdoor area tidy and clean.

School in Hawkhurst, Kent

Thank you for your comprehensive survey of our Forest School site. You fully understood our needs and directed us with a clear action plan. The following remedial work was completed to a high standard and sympathetically to the environment. The group were informative and polite. We also appreciated that one company was able to see the job through from problem to solution.

School in Colliers Green, Kent

Were very impressed with the efficiency with which our tree safety inspection was carried out and the report we received. Having a well-used 250-acre estate with many large and veteran trees we had concerns about the amount of follow up work that could have been created, but the recommendations were sensible and environmentally sensitive and the follow up work has been carried out in a professional manner to a high standard.

Saint Ronan's School



Call us on 01580 715596 or email us at info@thelivingforest.co.uk

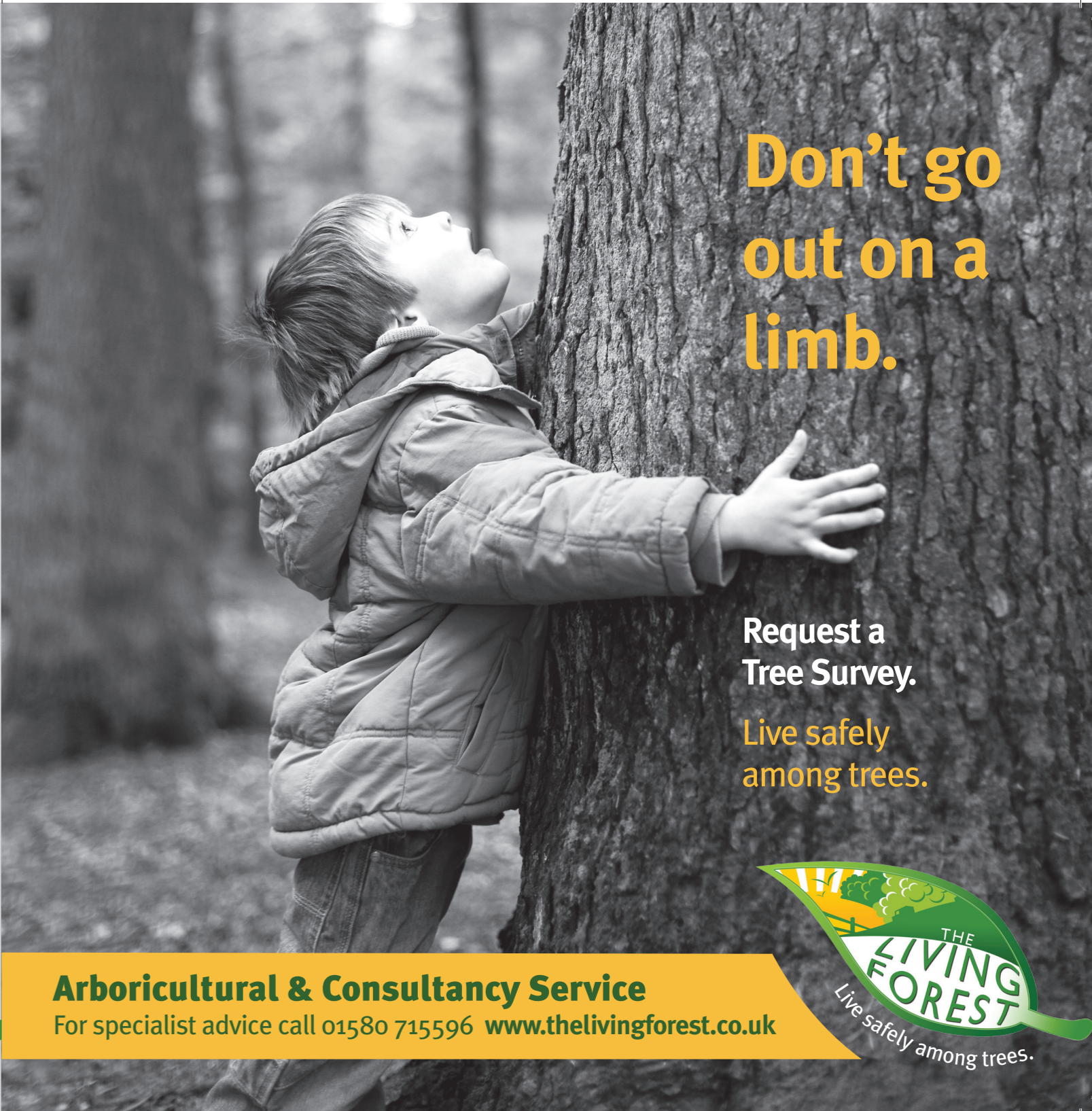


The Living Forest LTD
 1 Turnden Cottages
 Hartley Road
 Cranbrook
 Kent TN17 3QR

01580 715596
 07989 581295
 07799 477552
 info@thelivingforest.co.uk
 www.thelivingforest.co.uk



To request a Tree Survey please call us on 01580 715596
 or email us at info@thelivingforest.co.uk



Don't go
 out on a
 limb.

Request a
 Tree Survey.
 Live safely
 among trees.

Arboricultural & Consultancy Service
 For specialist advice call 01580 715596 www.thelivingforest.co.uk

